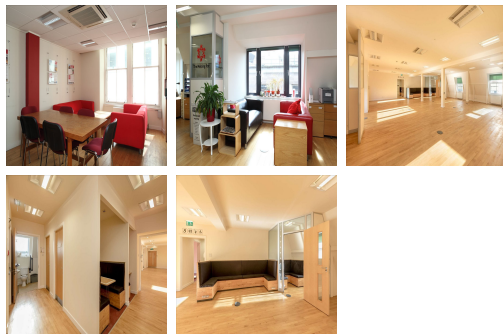


Serviced Office Space UK

5 Rose Street

Edinburgh EH2 2PR



This centre is located in the heart of Edinburgh, placing tenants and their teams in a well-connected and easily accessible location. This centre is less than five minutes away, from Waverley train station and Princes Street bus stops. Many restaurants, cafes, shopping centres, and other local amenities are close to this centre. Fantastic transport links are available due to the central location of this space. The regional transport links are also excellent and provide all prospective tenants with a range of frequent and convenient services throughout the area.

This centre is a great space designed to meet the demands of any modern business. The beautifully designed office spaces empower teams and companies for growth with high ceilings and large windows that provide natural lighting. The centre offers several facilities, such as high-speed internet, professional meeting rooms, concierge services, mail handling, business-class printers, and professional-grade daily cleaning. There are lounges and breakout areas where tenants can take a break during a hectic workday. This building is a wonderland for all things digital – providing an ever-expanding hub of creatives with never-ending networking opportunities.

transport links

Underground	N/A
Train Station	Edinburgh Waverley Station
Road Link	N/A
Airport	Edinburgh Airport

Coworking Spaces

- **Price** : Â£189 pcm
- **Min Price** : Â£189 pcm
- **Total Size** : 99 wkstns
- **Min Term** : 2 mnths
- **Max Term** : 36 mnths