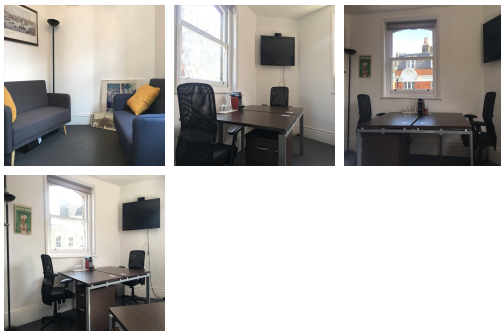


# Serviced Office Space UK

---

## London W1W 6DR



This workspace is located in London's West End at the corner of Foley Street and Hanson Street. The centre is just a five-minute walk away from Oxford Circus tube station, Goodge Street Station and Great Portland Street Station. This space enjoys close proximity to many bars, coffee shops and restaurants in the lively Oxford Circus area, and the quiet relaxed areas of Fitzrovia. London Heathrow Airport is less than 20 miles away, and can be reached in less than an hour by using public transport.

This workspace is in a small but perfectly located office on the top floor of a three-floor walk-up building in Fitzrovia. The office itself is very bright with lots of natural light and air. You would be sharing an open office with a Real Estate Development company in a creative but relaxed environment. This space would suit a start-up or a small established company looking for a Central London base. There are excellent on-site facilities including printing and copying facilities, lift access, professional meeting rooms and access to a kitchen. Spaces are furnished so are ready to start working from.

### transport links

<b>Underground</b>	Goodge Street
<b>Train Station</b>	Euston Station
<b>Road Link</b>	N/A
<b>Airport</b>	London City Airport

### Coworking Spaces

---

- **Price** : Â£400 pcm
- **Min Price** : Â£400 pcm
- **Total Size** : 2 wkstns
- **Min Term** : 3 mnths
- **Max Term** : 12 mnths