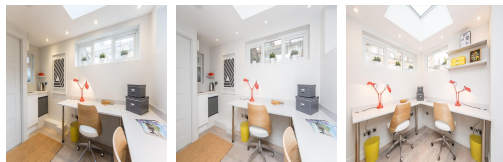


Serviced Office Space UK

124 Cleveland Street

London W1T 6PH



Cleveland Street is for boutique shops and restaurants of Marylebone and Fitzrovia and the green open spaces of nearby Regent's Park. Excellent nearby transport links include Great Portland Street (Metropolitan, Circle, HC lines) underground station 0.2 miles. Warren Street (Northern and Victoria lines) underground station is 0.3 miles. The regional transport links are also excellent and provide all prospective tenants with a range of frequent and convenient services throughout the area. Commuting to work is also easy.

A fully refurbished period building. The centre has a bright interior-designed office on the first floor of a charming period building. The property comprises a good-sized office, bathroom, and fitted kitchen. Access is available 24 hours a day, so the centre lends itself well to businesses that require flexible working hours. The space has large windows, allowing natural light to flow. The refined design and stunning landmark architecture are locally renowned as a commercially significant business establishment incorporating a neutral palette, international style, and industrial materials to create an elegant and fun workspace.

transport links

Underground	Great Portland Street
Train Station	Euston Station
Road Link	N/A
Airport	London City Airport

Leased Spaces

- **Min Size** : 1 sq ft
- **Max Size** : 3 sq ft
- **Total Size** : 5000 sq ft
- **Min Term** : 12 mnths
- **Max Term** : 36 mnths