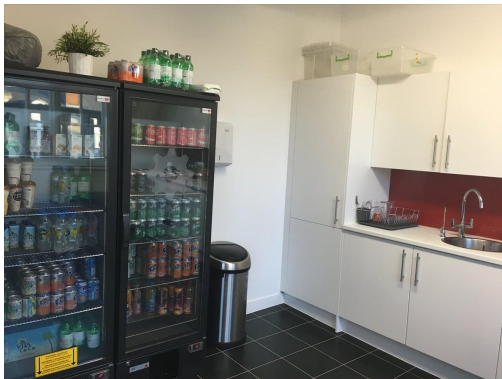


Serviced Office Space UK

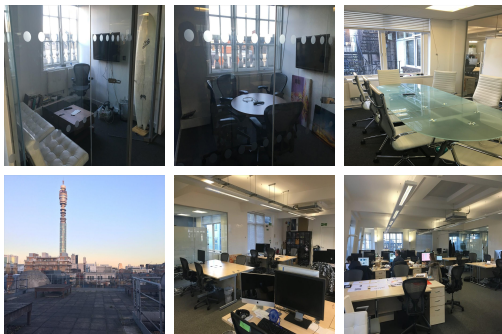
London W1W 6QL



Located in the West End of London in the vibrant Fitzrovia district, this fantastic workspace is conveniently located to benefit from the local amenities on Great Portland Street and is within walking distance of Regent Street and Oxford Circus. The centre also benefits from a prominent location on Great Portland Street and a roof terrace with views over London. The surrounding area is full of great places to eat as well as plenty of cafes and bars, hotels and businesses from a multitude of sectors.



This centre offers a trendy workspace on the top floor on the corner of Great Portland Street and New Cavendish Street. The open-plan workspace offers excellent natural light, great energy and a fun place for all to work. The centre offers inclusive access to the bookable boardroom and meeting rooms as well as a shared kitchen and printing/scanning facilities. The space also has a stunning large roof terrace, offering superb views over the skyline of London - what a way to spend some time away from the office. Tenants have access to the space 24-hours a day, meaning that flexible working is no issue.



transport links

Underground	Great Portland Street
Train Station	Euston Station
Road Link	N/A
Airport	London City Airport

Coworking Spaces

- **Price** : Â£550 pcm
- **Min Price** : Â£550 pcm
- **Min Term** : 1 mnths
- **Max Term** : 6 mnths