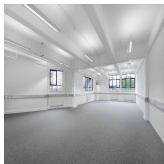
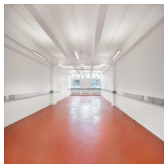


Serviced Office Space UK

London N22 6XF



This centre is located in the heart of London, placing tenants and their teams in a well-connected and easily accessible location. The centre is blessed with great transport links, with Alexandra Palace station and Wood Green underground station both within a 10-minute walk of the centre. The centre offers great facilities for both drivers and cyclists, with onsite parking and bike racks available. Tenants can also benefit from a wealth of surrounding amenities, with an abundance of shops, restaurants and cafes in the Wood Green area and Wood Green Shopping Centre only a few minutes walk away.

This centre provides both office and studio space. The centre comes equipped with a wealth of amenities, making it an ideal place for businesses of any kind and space – whether a start-up looking to put down roots for the first time or an established business looking to move to a new home. With its onsite centre management team, tenants can find friendly and helpful advice whenever they need it, with the manager dedicated to looking after the centre's community. Other amenities include loading bays, shower facilities, recycling facilities and CCTV. This building is a wonderland for all things digital – providing an ever-expanding hub of creatives with never-ending networking opportunities.

transport links

Underground	Wood Green
Train Station	Northumberland Park Depot (LRT)
Road Link	N/A
Airport	London City Airport

Coworking Spaces

- **Price** : Â£2160 pcm
- **Min Price** : Â£2160 pcm
- **Total Size** : 200 wkstns
- **Min Term** : 1 mnths
- **Max Term** : 12 mnths