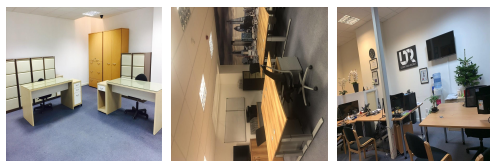
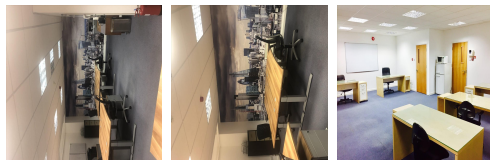
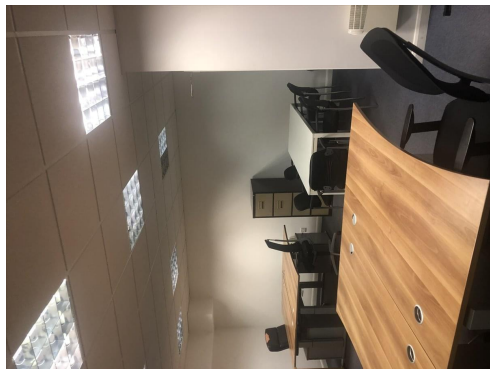


Serviced Office Space UK

London SE1 3GA



Bermondsey offers an array of independent bars, shops, cafés and retail outlets and is a rapidly growing hub for the creative industry. The space is located 0.6 miles from London Bridge station which offers easy transport communications to the City, West End, Docklands, famous Borough & Antiques market and Southern Fringe. The office benefits from being situated in a Prime Southbank spot, in a mews just off the very trendy Bermondsey Street, located right next door to the new White Cube Gallery. It is a fabulous environment for office workers who can benefit from the numerous cafes, restaurants, galleries, markets and buzz of Bermondsey Street!

Modern office space in basement in trendy Bermondsey London Bridge. Fabulous and very well located modern basement office space available for letting in London Bridge SE1. The offices are modern, very secure, open-plan and in the basement with a large light well. Flexible lease options are available. Approx. 680+ square feet of space and can very comfortably accommodate 12 people plus filing space. It is self-contained with separate access, very secure with door entry system, Intercom, CCTV and roller shutters front & back. There is CAT5, telephone and broadband connections. The office is furnished with 8 desks, chairs and filing cabinets. The tenants share toilet facilities with one other tenant and have access to hire an onsite 12 seat modern & equipped meeting room.

transport links

Underground	Borough Station
Train Station	London Bridge Underground Station
Road Link	N/A
Airport	London City Airport

Serviced Offices

- **Price** : Â£150 pcm
- **Min Price** : Â£150 pcm
- **Min Size** : 2 wkstns
- **Max Size** : 12 wkstns
- **Min Term** : 1 mnths
- **Max Term** : 2 mnths