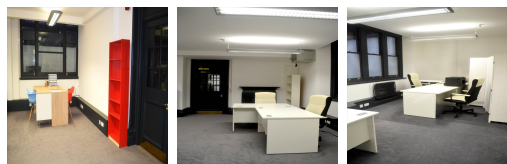


# Serviced Office Space UK

---

## 6 Lloyds Avenue

London EC3N 3AX



This centre is a two-minute walk to Fenchurch Street National Rail and Tower Hill Underground. Five minutes from the Gherkin, Sky Garden, Natural Kitchen and 10 minutes from Sushi Samba. There is a Pod on the road for lunch and break meals and snacks, local fast food like Pret and being right in the heart city everything you'll ever need.

This space has six desks in the heart of London City, all bills included and many benefits. Internet, Phone Line, Central Heating, CCTV, 24 Hour Access on Llyods Avenue. Usage of meeting area whenever you wish (as long as nobody else in the office has booked it) and concierge service from 9am - 6pm. Office size in total 66.7m<sup>2</sup>.

### transport links

<b>Underground</b>	Tower Hill
<b>Train Station</b>	Liverpool Street Station
<b>Road Link</b>	N/A
<b>Airport</b>	London City Airport

### Serviced Offices

---