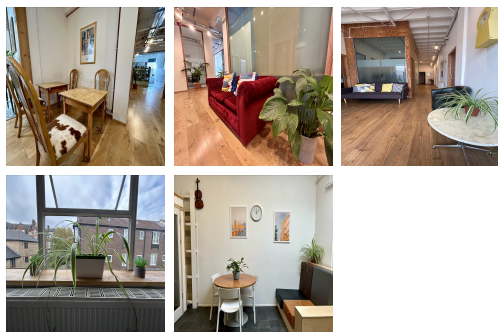


Serviced Office Space UK

465 A & C Hornsey Road

London N19 4DR



The space is situated in the heart of Islington, close to the Emirates Stadium. The nearest Tube Rail Network and Buses are a five-minute walk. Archway underground station is 0.5 miles away from this business centre. London City Airport and Heathrow Airport are 8.6 miles and 15.8 miles away. The regional transport links are also excellent and provide all prospective tenants with a range of frequent and convenient services throughout the area. This centre is the ideal setting for those professionals commuting from even the furthest reaches of the wider region.

This well-established luxury business centre offers many inclusive facilities and services to clients. Facilities include fully furnished offices with high-speed internet, parking space, meeting space, professional-grade daily cleaning, reception services, IT support and telecom services, administrative support, beverages, and much more. The business centre is accessible 24 hours a day so the occupants can work flexibly. There are lounges and breakout areas where tenants can take a break during a hectic workday. The office space has been built with the utmost sophistication so clients can work here in a pleasant, refreshing mood.

transport links

Underground	Archway
Train Station	St Pancras International
Road Link	N/A
Airport	London City Airport

Serviced Offices

- **Price** : £195 pcm
- **Min Price** : £195 pcm
- **Min Size** : 1 wkstns
- **Max Size** : 12 wkstns
- **Total Size** : 12 wkstns
- **Min Term** : 3 mnths
- **Max Term** : 12 mnths