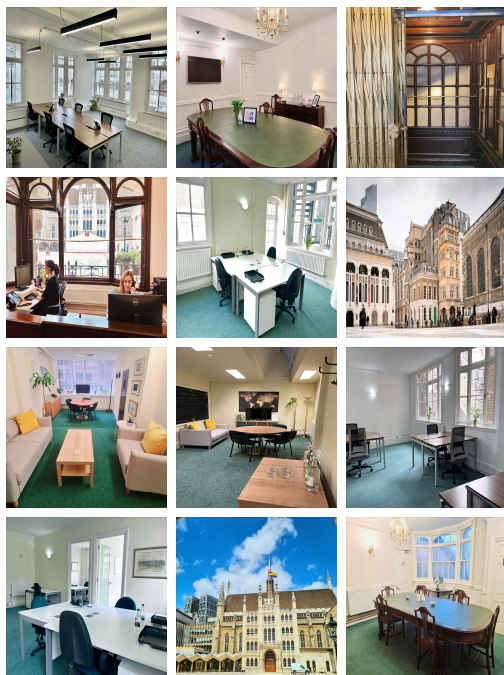


Serviced Office Space UK

Blackwell House

London EC2V 5AE



Located in the financial district with impressive views and within easy reach of the Bank of England, LIFFE, and The Stock Exchange. This centre enjoys access to prime banking, legal and accountancy facilities. Moorgate underground and Cannon Street rail stations are within a few minutes walk. Enjoy the many world-famous attractions and landmarks that London has to offer - take in a West End show, take a stroll along the Thames or eat in some of the finest restaurants available anywhere. This centre is the ideal setting for those professionals commuting from even the furthest reaches of the wider region.

This centre is a great space that has been designed to meet the demands of any modern business. Offices and suites available for one to eight people are available on six floors accessible by stairs and lift. The centre is accessible 24 hours a day so the occupants can work flexibly. This centre has a distinctive boardroom seating up to twelve people and a professional meeting room that seats four people for hire by the hour or day. This recently refurbished centre provides an excellent platform for any business to flourish with its cost-effective workplace solutions. This business centre is the leading workspace provider with multiple office solutions for every business.

transport links

Underground	Bank Station
Train Station	Liverpool Street Station
Road Link	M1 jnct 1
Airport	London City Airport

Virtual Office

- **Price** : £45 pcm
- **Min Price** : £45 pcm
- **Min Term** : 3 mnths
- **Max Term** : 24 mnths