

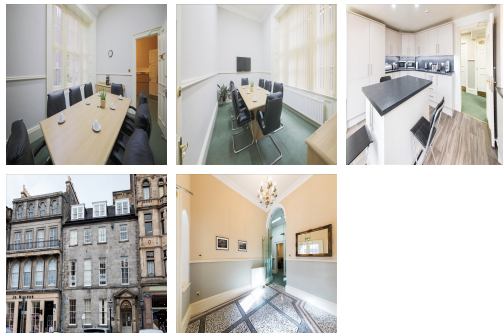
Serviced Office Space UK

91 George Street

Edinburgh EH2 3ES



The building is located on George Street, in the very heart of Edinburgh. There are excellent transport links close by including Waverley train station and local bus and tram links. The tram easily connects the city centre to Leith and Edinburgh Airport. George Street itself is one of the main shopping streets in Edinburgh with a great selection of well known and independent shops, as well as an exciting selection of cafes, restaurants and bars. The new St James Quarter is also just a short walk away.



Strathmore's location at 91 George Street is located in the very centre of Edinburgh. Following careful renovation the traditional Georgian townhouse offers a selection of offices, from smaller spaces suitable for up to two desks to larger open plan spaces for larger companies. Offices can be furnished or unfurnished depending on requirements. There is a meeting room(s) onsite which is available to book via our online booking system. There is also a business lounge area which lends itself to video calls or informal meetings. Bike racks are available to the front of the building for clients to use.

transport links

Underground	N/A
Train Station	Edinburgh Waverley Station
Road Link	N/A
Airport	Edinburgh Airport

Serviced Offices

- **Price** : Â£250 pcm
- **Min Price** : Â£250 pcm
- **Min Size** : 1 wkstns
- **Max Size** : 25 wkstns
- **Total Size** : 80 wkstns
- **Min Term** : 6 mnths
- **Max Term** : 36 mnths