

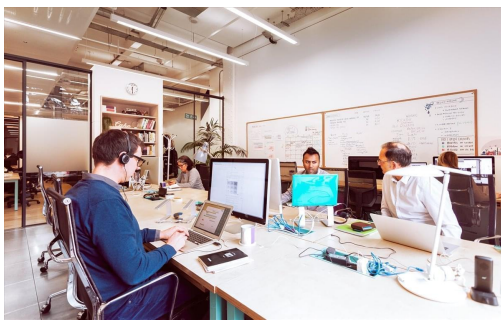
# Serviced Office Space UK

## 18 Finsbury Square

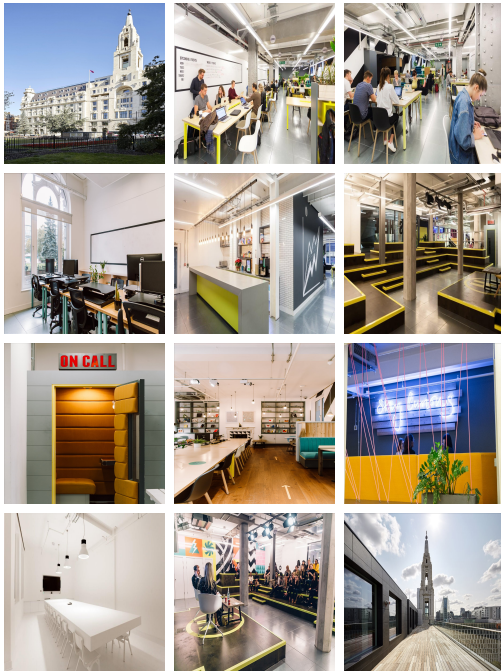
London EC2A 1AH



With the front door leading onto Finsbury Square and the City, and the back door offering a route straight into Shoreditch, this is the perfect location to grow a startup. The centre is just a 5-7 minute walk from Moorgate, Old Street and Liverpool Street Underground. Many restaurants, cafes, shopping centres, and other local amenities are close to this centre. This building is a wonderland for all things digital – providing an ever-expanding hub of creatives with never-ending networking opportunities.



This centre offers a co-working space situated in the heart of London's innovation district inside an iconic building. This place is perfect for tech-focused start-ups, and corporate innovation teams. Memberships provide users with included building utilities, reception and post handling, workstations, high-speed internet connection, guest services, beverages, showers, 24/7 security, and digital access control. This centre also provides access to all communal kitchen areas, and collaboration spaces, and access to meeting rooms and classrooms. The workspace is dog-friendly, so clients can bring their furry coworkers to the workspace. Moreover, the workspace offers breakout areas where members can enjoy beverages while networking with coworkers and like-minded people.



### transport links

<b>Underground</b>	Moorgate
<b>Train Station</b>	Liverpool Street Station
<b>Road Link</b>	N/A
<b>Airport</b>	London City Airport

### Coworking Spaces

- **Price** : Â£240 pcm
- **Min Price** : Â£240 pcm
- **Total Size** : 157 wkstns
- **Min Term** : 1 mnths
- **Max Term** : 60 mnths