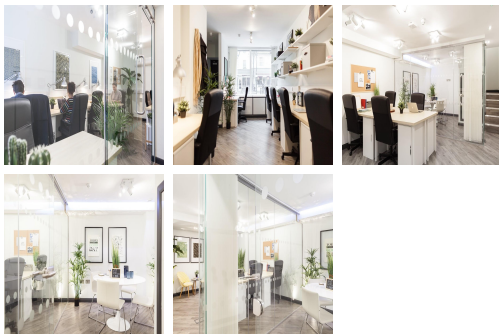


# Serviced Office Space UK

## London NW1 1JD



This centre is located in the heart of London, placing tenants and their teams in a well-connected and easily accessible location. This centre is less than a 5-minute walk to Kings Cross, Street Pancras and Euston Stations (Victoria, Northern, Piccadilly, Circle, District, Metropolitan lines, national and international rail links). There is a list of restaurants, bars, delis, supermarkets and coffee shops in the Kings Cross, Euston and Russel Square areas. Russel Square is a serene park to hang out in the summer and also has market stalls set up at King's Cross a couple of times a week that sell freshly produced food.

This centre is a great space designed to meet the demands of any modern business. This professional business centre offers a private office. This centre is fully serviced and includes several amenities. The newly refurbished office space has everything a business needs to grow and thrive, from video conference equipment and commercial printers to a modern, fully-equipped kitchen and a shower. In addition to a pair of meeting rooms that are free to use, there is a spacious lounge area for casual meetings and breakout sessions. This building is a wonderland for all things digital – providing an ever-expanding hub of creatives with never-ending networking opportunities.

## transport links

<b>Underground</b>	Euston
<b>Train Station</b>	St Pancras International
<b>Road Link</b>	N/A
<b>Airport</b>	London City Airport

## Serviced Offices

- **Price** : £333 pcm
- **Min Price** : £333 pcm
- **Min Size** : 11 wkstns
- **Max Size** : 24 wkstns
- **Total Size** : 30 wkstns
- **Min Term** : 12 mnths
- **Max Term** : 60 mnths