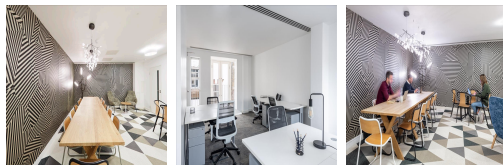
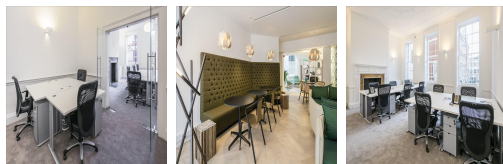
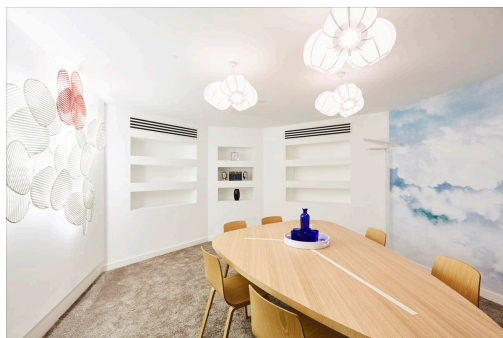


Serviced Office Space UK

11 Golden Square

London W1F 9JB



This centre is within a five-minute walk of Piccadilly station, providing easy access to the Piccadilly and Bakerloo lines. The nearest mainline rail station is Charing Cross to the south-east. Many bus routes also serve the area. The area is bustling with bars, restaurants and many shops, including the Liberty department store offering luxury goods. The regional transport links are also excellent and provide all prospective tenants with a range of frequent and convenient services throughout the area.

This centre is a great space designed to meet the demands of any modern business. The building is flooded with natural light and retains original period features, including ornate fireplaces and high ceilings. There is also a meeting room and breakout area with wifi, bike racks, a shower, concierge services, mail handling, business-class printers, a beautiful kitchen, and professional-grade daily cleaning facilities onsite. There are lounges and breakout areas where tenants can take a break during a hectic workday. This building is a wonderland for all things digital – providing an ever-expanding hub of creatives with never-ending networking opportunities.

transport links

Underground	Piccadilly Circus
Train Station	Piccadilly Circus Station
Road Link	N/A
Airport	London City Airport

Serviced Offices

- **Price** : Â£700 pcm
- **Min Price** : Â£700 pcm
- **Min Size** : 3 wkstns
- **Max Size** : 100 wkstns
- **Total Size** : 101 wkstns
- **Min Term** : 3 mnths
- **Max Term** : 36 mnths