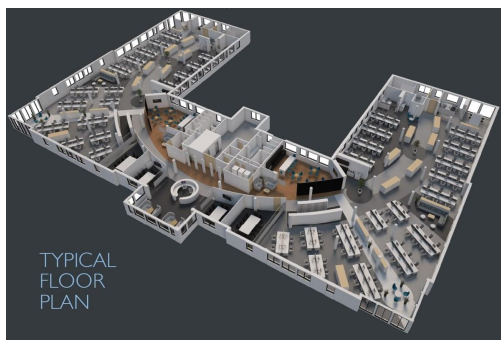
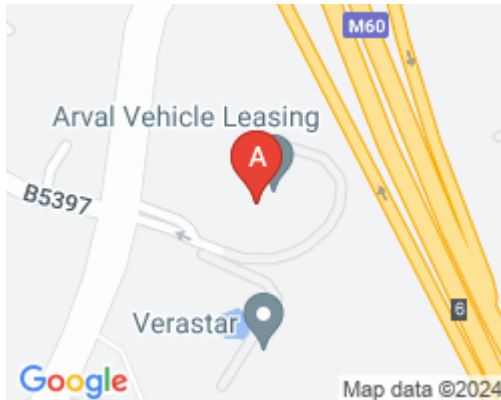


Serviced Office Space UK

Old Hall Road

Sale M33 2GS



This building is located off Old Hall Lane, approximately 250m from J6 of the M60 Manchester orbital motorway, approximately six miles south west of Manchester City Centre. The M60 Manchester orbital motorway provides direct access to the region's motorway network. Manchester International Airport is just five miles to the south. The property is situated within walking distance of Sale Water Park and Dane Road Metrolink stations providing access to Manchester City Centre and beyond.

This centre is an attractive three storey self-contained office building of brick construction, complete with double glazed window units housed under a pitched roof situated in a beautiful landscaped environment. The office accommodation is arranged over ground and two upper floors. There is on-site surface car parking with the building consisting of 320 spaces at a ratio of 1:190 sq. ft.

transport links

Underground	N/A
Train Station	Manchester United Football Ground Station
Road Link	N/A
Airport	Royal Travel

Leased Spaces

- **Price** : £17 pcm
- **Min Price** : £17 pcm
- **Total Size** : 61000 sq ft