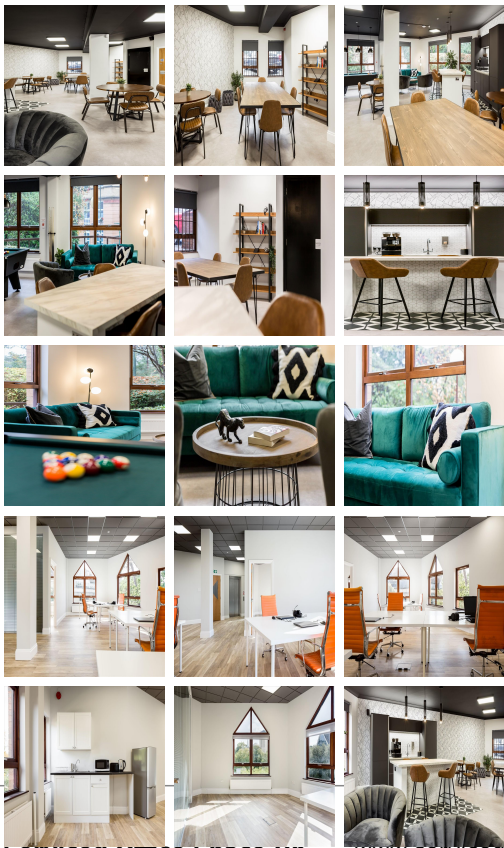


Serviced Office Space UK

St Stephen's Court

Bournemouth BH2 6LA



This workspace is behind the Town Hall in the centre of Bournemouth, within a short walk from the Square and BH2, with plenty of dining and entertainment options and numerous shopping outlets. Meyrick Park is an 18-hole Golf Course with a gym and Health Club. Bournemouth is also just a stone's throw away. The surrounding area offers a wide range of eateries, and amenities like banks and retail shops, providing tenants with everything at their doorstep. Bournemouth has rail connections from the railway station to London, Manchester and Birmingham.

The refined design and stunning landmark architecture are locally renowned as a commercially significant business establishment incorporating a neutral palette, international style, and industrial materials to create an elegant and fun workspace. Spacious, fully-furnished offices offer a team somewhere to work comfortably, where members can move in and get started - no need for time wasted setting up various desks. This stylish contemporary building has an entrance that makes a statement as the first impression for guests. Sleek, private office space is available that boosts productivity. This amenity-rich complex is the perfect location for any business seeking a modern workspace to thrive.

transport links

Underground	N/A
Train Station	Bournemouth
Road Link	N/A
Airport	Bournemouth Airport

Serviced Offices

- **Price** : Â£200 pcm
- **Min Price** : Â£200 pcm
- **Min Term** : 1 mnths
- **Max Term** : 12 mnths