

# Serviced Office Space UK

## 32 Curzon Street

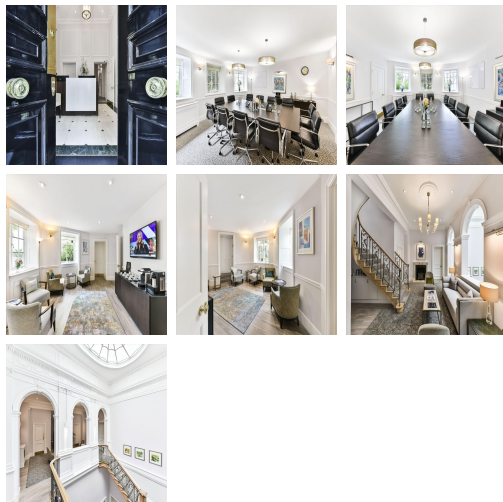
London W1J 7WS



The building has Green Park Underground Station, which has access to the Jubilee, Piccadilly and Victoria lines. The area has various hotel options, including high-end places to stay - great for visitors requiring accommodation. There are places to eat and drink, including the Shepherds Tavern, El Pirata of Mayfair and Smith and Whistle. Shopping options nearby are Abercrombie and Fitch, the Burlington Arcade and various other well-known outlets. This centre is conveniently located and boasts excellent transport links as well.



This Grade II Listed property has been sympathetically renovated and retains many original features, a sweeping staircase lit by a large roof lantern. There are two business lounges on the top floor on the galleried landing and the other overlooking the garden, ideal for informal gatherings. The centre has professional meeting rooms for more formal meetings, administrative and IT support. This workspace offers a wide range of professional services and spectacular customer service to help the members with everything and anything. Tenants at this centre are very friendly and welcoming, providing a lovely atmosphere with lots of energy.



### transport links

<b>Underground</b>	Green Park
<b>Train Station</b>	Victoria Station
<b>Road Link</b>	N/A
<b>Airport</b>	London City Airport

### Serviced Offices

- **Price** : Â£1300 pcm
- **Min Price** : Â£1300 pcm
- **Min Size** : 1 wkstns
- **Max Size** : 30 wkstns
- **Total Size** : 100 wkstns
- **Min Term** : 3 mnths
- **Max Term** : 36 mnths