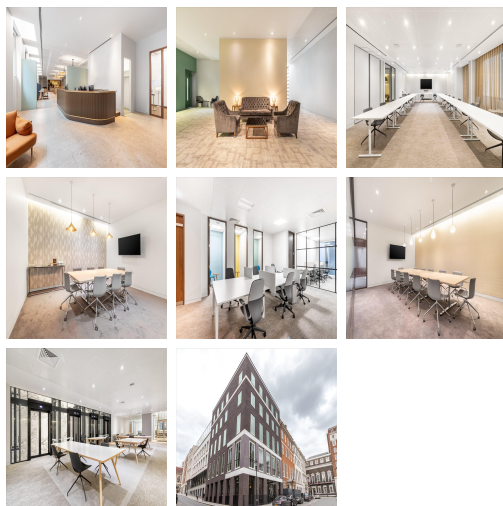
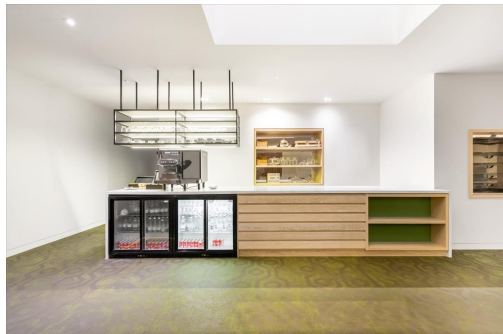


# Serviced Office Space UK

---

## London SW1Y 4JU



Just a short walk from Piccadilly and Green Park tube stations, St. James's Square is the only square in the exclusive St James's district of the City of Westminster. It is home to the headquarters of a number of well-known businesses, including BP and Rio Tinto Group, to the London Library and the premises of the think tank Chatham House. Around the area are a number of restaurants, places to enjoy a drink and various hotels, including The Cavendish London. There are also high-end shopping outlets located nearby.

This is a stunning new building designed by renowned architect Eric Parry on a site that was once home to Josiah Wedgwood who is widely credited with the industrialization of the manufacture of pottery. Having developed this centre from an idea four years ago into a thriving and productive central London base for over 270 businesses, our Mayfair base will remain and in May, we look forward to opening a brand new, purpose designed location where we can improve the range of products and services available. This centre will be able to offer dedicated desks alongside hot desks, an enhanced food offering, a presentation room for up to 90 people and a fully interactive, innovation hub.

## transport links

<b>Underground</b>	Green Park
<b>Train Station</b>	St. James's Park London Underground Station
<b>Road Link</b>	N/A
<b>Airport</b>	London City Airport

## Virtual Office

- **Price** : Â£209 pcm
- **Min Price** : Â£209 pcm
- **Min Term** : 24 mnths
- **Max Term** : 999 mnths