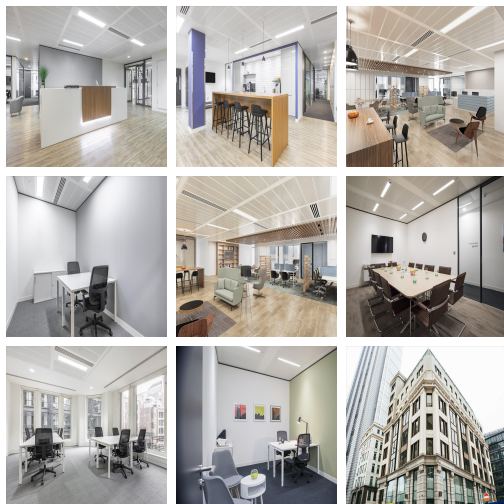
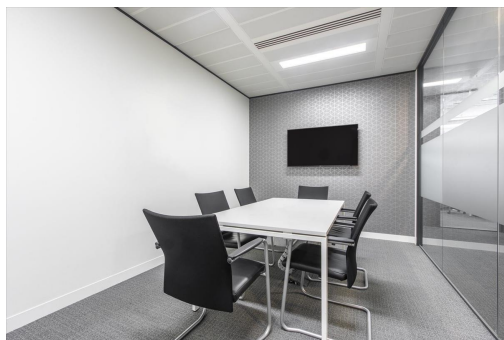


Serviced Office Space UK

63 St Mary Axe

London EC3A 8AA



This business centre enjoys a central location close to Liverpool Street station in the City of London. The area provides easy access to all the financial services, insurance and publishing companies in this buzzing part of the capital, as well as local hotspots like Leadenhall Market and popular eateries for business lunches. There are also well-known places to enjoy a drink, including the Slug & Lettuce, Balls Brothers Bury Court and All Bar One. Close to the famous and iconic Gherkin building, this is the ideal location in the city.

Recently refurbished, this business centre near Liverpool Street station is built to impress, from the double-height atrium to its stylish offices and meeting rooms. There is a friendly reception to greet visitors, meeting rooms are available to hire by the hour 1/2 day or full day. If you thrive in a creative shared working environment or need space for a project team, the co-working spaces are ideal. They provide a comfortable hot-desk in the buzzing heart of the City with like-minded people to share the collaborative atmosphere. Gain access to our global network of 2000 business lounges worldwide. Get connected with free use of 15 million WiFi hotspots worldwide. This centre offers all-inclusive pricing, so you can move in with peace of mind that there will be no unexpected costs each month.

transport links

Underground	Monument
Train Station	Liverpool Street Station
Road Link	N/A
Airport	London City Airport

Virtual Office

- **Price** : £159 pcm
- **Min Price** : £159 pcm
- **Min Term** : 24 mnths
- **Max Term** : 999 mnths