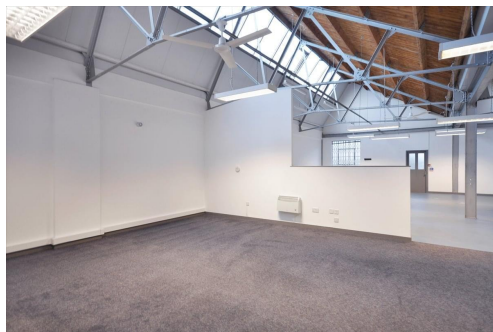


Serviced Office Space UK

9 Power Road

London W4 5PY



This business centre in London, a west London, has everything it needs on its doorstep, within walking distance to Chiswick High Road. The workspace is convenient to anywhere. Moreover, many cafes and restaurants are also very close to the workspace. This space has excellent transport links, is a short seven-minute walk from Gunnersbury tube station and is close to Junction 2 of the M4. Heathrow International Airport is only a 20-minute drive away, perfect for any international business partners.

The refined design and stunning landmark architecture are locally renowned as a commercially significant business establishment incorporating a neutral palette, international style, and industrial materials to create an elegant and fun workspace. Spacious, fully-furnished offices offer a team somewhere to work comfortably, where members can move in and get started - no need for time wasted setting up various desks. This amenity-rich complex is the perfect location for any business seeking a modern workspace to thrive. This stylish contemporary building has an entrance that makes a statement as the first impression for guests. Sleek, private office space is available that boosts productivity.

transport links

Underground	Gunnersbury
Train Station	Victoria Station
Road Link	N/A
Airport	Heathrow Airport

Serviced Offices

- **Price** : Â£398 pcm
- **Min Price** : Â£398 pcm
- **Min Size** : 2 wkstns
- **Max Size** : 20 wkstns
- **Total Size** : 100 wkstns
- **Min Term** : 3 mnths
- **Max Term** : 36 mnths