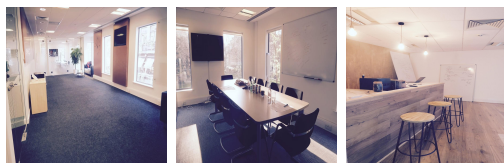
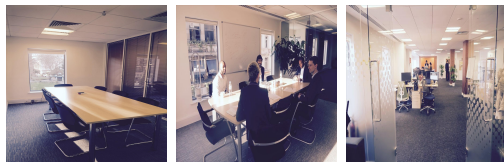
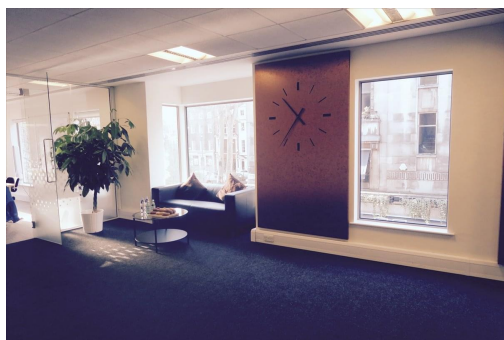


Serviced Office Space UK

12 Soho Square

London W1D 3QF



This space is on the desirable Soho Square in the heart of Media Hub, with several tube stations in walking distance and a wealth of London's best restaurants, bars and shops. The centre has access to airports, with London City and Heathrow accessible by public transport. The regional transport links are also excellent and provide all prospective tenants with a range of frequent and convenient services throughout the area. With everything on the doorstep of this business centre, there are also many recreational activities around the corner.

This workspace offers a wide range of professional services and spectacular customer service to help the members with everything and anything. Tenants at this centre are very friendly and welcoming, providing a lovely atmosphere with lots of energy. Spacious, fully-furnished offices offer a team somewhere to work comfortably, where members can move in and get started - no need for time wasted setting up various desks. This amenity-rich complex is the perfect location for any business seeking a modern workspace to thrive. This ultra-modern business centre has amenities that are affordable and meaningful.

transport links

Underground	Tottenham Court Road
Train Station	Tottenham Court Road
Road Link	N/A
Airport	London City Airport

Coworking Spaces

- **Price** : Â£500 pcm
- **Min Price** : Â£500 pcm
- **Total Size** : 100 wkstns
- **Min Term** : 1 mnths
- **Max Term** : 12 mnths