

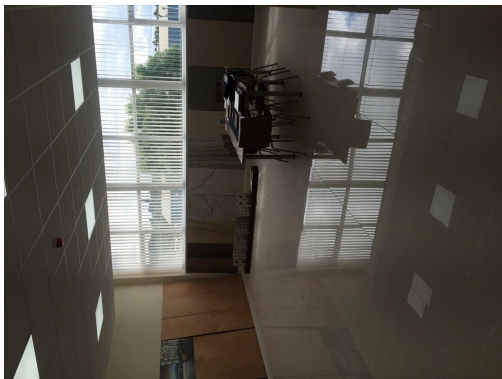
Serviced Office Space UK

Shelton New Road

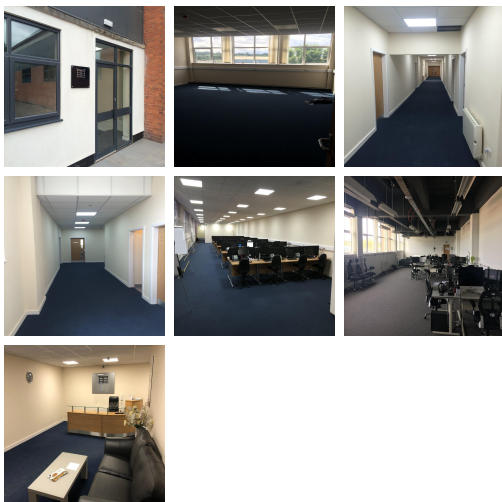
Stoke-on-Trent ST4 7AB



The building is very prominently located at the junction with Shelton New Road (B5045) and Etruscan Street and is on a main bus route. Newcastle-under-Lyme Town Centre is approx 1 mile to the west and Hanley City Centre is approx 1 mile to the east. Direct access to the A500 (southbound) is within 500 yards with northbound access approximately half a mile. M6 and J15 are 5 minutes from this business centre. The building boasts a canal-side boundary with pleasant towpath walks to various shops and restaurants.



This centre is a former ceramic production premises originally constructed in 1953 and now the subject of a recent redevelopment project, to create a range of ground floor and upper floor part-serviced office suites. The entire building has recently been refurbished to an excellent standard throughout and now offers light and airy office accommodation in a range of different-sized suites. The accommodation benefits from suspended ceilings with recessed lights, and dado trunking and is carpeted. The suites are accessed via a central reception area which leads to the stairs and passenger lift, and will appeal to a wide range of large and small businesses.



transport links

Underground	N/A
Train Station	Stoke-on-Trent
Road Link	N/A
Airport	Manchester Airport

Leased Spaces

- **Price** : Â£10 pcm
- **Min Price** : Â£10 pcm
- **Min Size** : 1 sq ft
- **Max Size** : 500 sq ft
- **Total Size** : 25000 sq ft
- **Min Term** : 6 mnths
- **Max Term** : 36 mnths