

# Serviced Office Space UK

## Newcastle-Under-Lyme ST5 2AW



The property is very prominently located fronting Merrial Street in Newcastle under Lyme town centre. Direct neighbours consist of: estate agents, solicitors and fashionable cafe/bars. The building is 200ft from Newcastle's high street with businesses such as: Boots, Post Office, Specsavers, Clarks, McDonalds, Pizza Hut, Dorothy Perkins, and other well known high street banks and brands. The property is conveniently located to the road network with the A500 being directly accessed via the A53 approximately 1½ miles away.

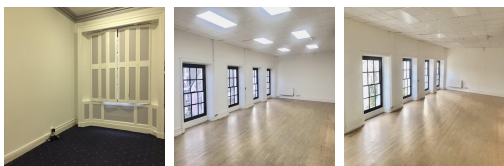


A unique opportunity to occupy a town centre landmark building suitable for a variety of uses. This business centre is a prominent Georgian building with its own private front garden, situated on Merrial Street in Newcastle-under-Lyme's town centre. The building has been refurbished to a high standard whilst retaining many of its period features. Facilities include a secure door entry system, gas central heating, with kitchen and toilet facilities throughout. This property offers large open plan suites or smaller sized offices, making it great for flexible working.



### transport links

<b>Underground</b>	N/A
<b>Train Station</b>	Stoke-on-Trent
<b>Road Link</b>	N/A
<b>Airport</b>	Hixon Airfield



### Leased Spaces

- **Total Size** : 7700 sq ft

