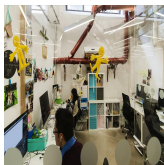
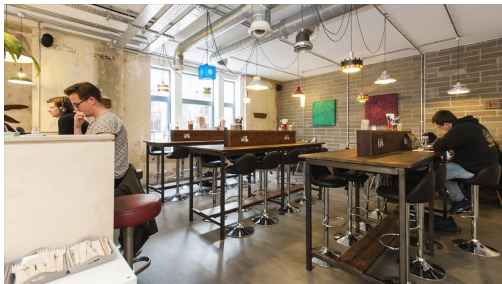


# Serviced Office Space UK

---

## London EC1V 1NR



Just a couple of minutes walk from the iconic Old Street roundabout (and the Northern Line), this centre is right in the centre of Tech City. It is extremely central being just a short walk from Moorgate and Liverpool Street station and numerous bus routes pass by. As well as being very well connected by transport, you'll have lots to enjoy in Shoreditch where there are great cafes, shops, bars, restaurants and other facilities in the local area, such is the diverse and exciting nature of London's buzzing start-up community.

Eagle House is a recently refurbished Art Deco building which retains many of its original features. The centre provides a spacious high ceiling environment which makes it airy and spacious. You can expect 1Gb superfast leased line internet, meeting rooms and break out areas that are free to use. The centre also has an onsite cafe which serves artisan London roasted coffee and is great for casual meetings or as a breakout area. You and your team, can participate in business networking events, fun socials and our well-being programme.

### transport links

<b>Underground</b>	Old Street
<b>Train Station</b>	Liverpool Street Station
<b>Road Link</b>	N/A
<b>Airport</b>	N/A

### Coworking Spaces

---

- **Price** : £296 pcm
- **Min Price** : £296 pcm
- **Min Term** : 2 mnths