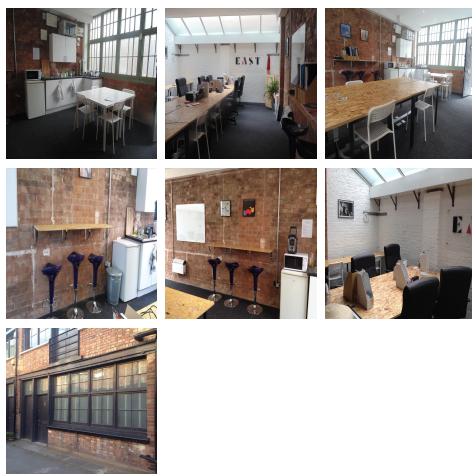
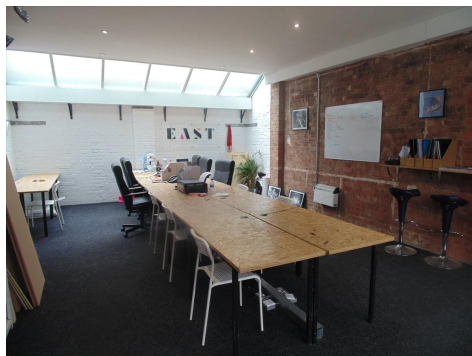


Serviced Office Space UK

London E2 6QQ



The office is located between Bethnal Green Road and Hackney Road so you are surrounded by plenty of watering holes and eateries. This centre is only five minutes walk from Cambridge Heath Station (Mainline), 10 minute walk from Bethnal Green tube (Central Line) and Hoxton Overground (Overground), with London Fields Station a 15 minute walk away. The local buses are the 55, 48, 8, 388 and 26, making the centre even more accessible. There are local amenities nearby, including different places to eat and drink.

This centre offers a creative and professional environment for you to work in within a newly refurbished office, surrounded by other creative companies that include graphic designers, artists, bespoke furniture makers and tech start up's, all set within a gated Victorian mews building which has been newly refurbished. There is a bathroom (with shower) next door and a separate kitchen. The space is completely separate from the centre's business and on its own ground floor with up to 12 desks available to allow a spacious working environment. You will be provided with your own entrance key and secure storage (per desk). The office will be cleaned once a week and the owners are local and easily contactable. Whilst the space is being rented you will be able to use the address as your business address to receive post. Rent is £2800 per calendar month (3 month minimum) with all bills and VAT included - which is only £7.70 a day! The space has high speed wired internet and wifi, power points, newly installed central heating and is fully insured and alarmed. The centre will require a one month deposit and one month notice of leave.

transport links

Underground	Bethnal Green London Underground Station
Train Station	Liverpool Street Station
Road Link	N/A
Airport	London City Airport

Coworking Spaces

- **Price** : £235 pcm
- **Min Price** : £235 pcm
- **Total Size** : 500 wkstns
- **Min Term** : 3 mnths