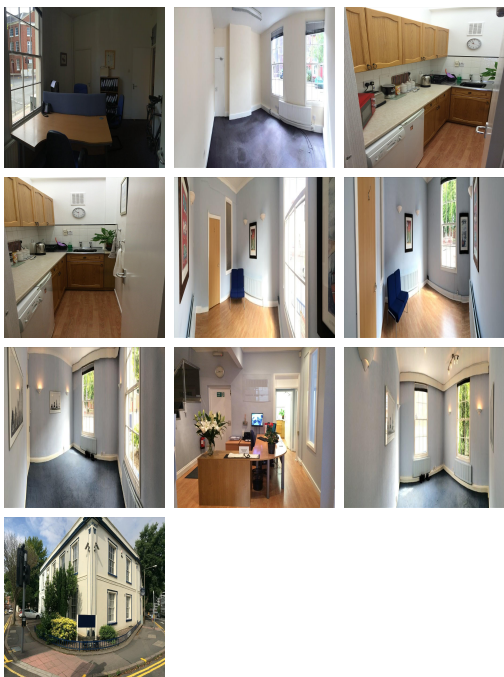


Serviced Office Space UK

Leicester LE1 6XF



The office is situated in the heart of a professional business area with the town centre being just a five-minute walk. The building is based where there is easy access to various transport links such as the train station and motorways while hotels and restaurants are nearby.

The property is an attractive period style building which has been extensively modernised and is maintained to a very high standard situated in the heart of the professional area and a short walking distance to the city centre. The buildings has secure parking at the rear with electric gates and a visitors car parking space at the front of the building. A conference room is also available and the office sizes range from two desk to four desk. Please contact further to discuss the prices and any further information about the building.

transport links

Underground	N/A
Train Station	Leicester Station
Road Link	N/A
Airport	East Midlands Airport

Coworking Spaces

- **Price :** £225 pcm
- **Min Price :** £225 pcm