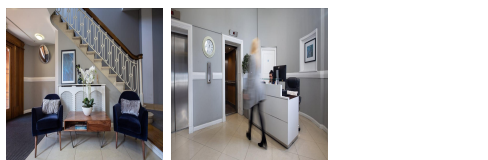
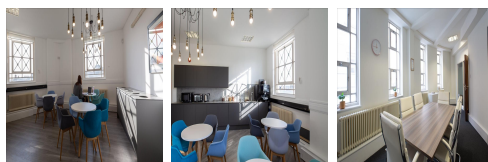
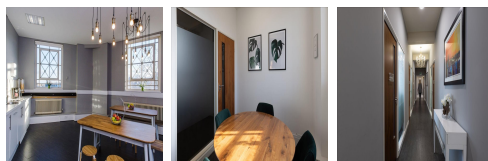
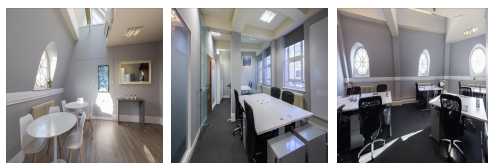


# Serviced Office Space UK

## 4 Queens Road

London SW19 8YB



This centre is located in the heart of London, placing tenants and their teams in a well-connected and easily accessible location. This building forms part of the centre court shopping development and is adjoined to Wimbledon's train and tube station, allowing easy access to central London and the south-west. It is also well-positioned for Heathrow, the M25 and A3. There are many cafes, bars and restaurants, including well-known chain establishments and independent eateries. The regional transport links are also excellent and provide all prospective tenants with a range of frequent and convenient services throughout the area.

This business centre offers some 7,156 square feet of self-contained office space and meeting rooms across the first floor, and each suite has excellent natural light. The building has a choice of boardrooms and meeting rooms equipped with wifi, breakout areas, and bicycle racks, great for those cycling to work. The space is accessible 24 hours a day with a security system. The centre also benefits from the presence of an on-site cleaning team. This building is a wonderland for all things digital – providing an ever-expanding hub of creatives with never-ending networking opportunities. This centre is a great space designed to meet the demands of any modern business.

### transport links

<b>Underground</b>	Wimbledon
<b>Train Station</b>	Victoria Station
<b>Road Link</b>	N/A
<b>Airport</b>	Heathrow Airport

### Serviced Offices

- **Price** : £400 pcm
- **Min Price** : £400 pcm
- **Min Size** : 2 wkstns
- **Max Size** : 40 wkstns
- **Total Size** : 238 wkstns
- **Min Term** : 3 mnths
- **Max Term** : 36 mnths