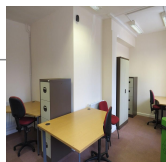
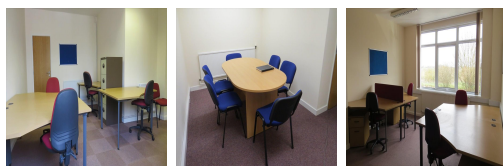


# Serviced Office Space UK

---

## Plumpton Road

### Hoddesdon EN11 0ES



The serviced offices are situated in the Rye Park Area of Hoddesdon and being adjacent to the New River and River Lea, this provides a truly beautiful setting for the office user. The offices are located within easy access to the A10, M25 and M11, and are within 300 yards of the mainline station leading to Liverpool Street and the close tube connections of Tottenham Hale and Seven Sisters.

These serviced offices offer prestigious furnished accommodation with 24 hour access for the small business. Office suites are fully inclusive of rates, light and heat and are available in a variety of sizes allowing business users the flexibility to expand or reduce their business as conditions allow. Immediate occupation can be obtained without having to enter into long term lease and personal guarantees or incurring expensive legal costs.

### transport links

<b>Underground</b>	N/A
<b>Train Station</b>	Rye House
<b>Road Link</b>	N/A
<b>Airport</b>	N/A

### Serviced Offices

---

- **Price** : Â£170 pcm
- **Min Price** : Â£170 pcm
- **Min Size** : 2 wkstns
- **Max Size** : 9 wkstns
- **Total Size** : 43 wkstns
- **Min Term** : 3 mnths