

Serviced Office Space UK

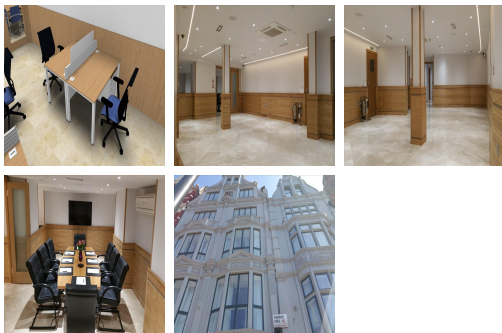
London W2 1DS



These offices are located in the renowned Edgware Road area of London, and are less than a minute's walk away from Edgware Road Underground Station with great connections across London. The offices are situated in Westminster's W2, Zone 1 in London, which is within easy reach of some of the city's most popular sights and attractions. Shops in the area include a large Marks & Spencer store, and there are many bars and restaurants to enjoy. Hotels within walking distance include the Hilton London Metropole.



These offices are in the renowned Edgware Road, London and are located less than a minutes' walk away from Edgware Road Station, offering access to the Circle, District and Hammersmith & City Lines of the London Underground network. . The office space is set in a charismatic building with newly finished interior décor and fittings that have been installed to a high standard, creating an impressive workspace. Amenities include conference facilities, printing and copying facilities, meeting rooms, a professional on-site management team to help with any queries or issues, reception services and showers.



transport links

Underground	Marylebone Underground Station
Train Station	Marylebone Underground Station
Road Link	N/A
Airport	N/A

Coworking Spaces

- **Price** : £495 pcm
- **Min Price** : £495 pcm
- **Total Size** : 11 wkstns