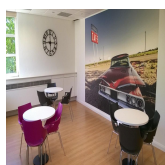
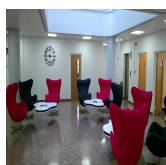
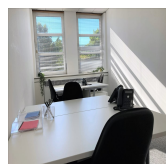
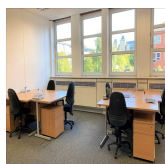
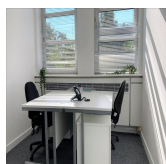


Serviced Office Space UK

Edinburgh EH12 9DQ



The centre benefits from excellent communication links. It is just six miles west of the city centre and two miles east of Edinburgh International Airport. Conveniently located for the City Bypass and its junction with the M8 motorway, A8, M9 and A90/M90. There are also three tram stops and two train stations within easy walking distance to provide access to the heart of the city in just over five minutes by rail or 20 minutes by tram. The Gyle shopping centre is also easily accessible on foot with an excellent choice of shops and cafes.

This business centre is situated in a bright, modern and recently fully refurbished building. The three-storey business centre, set on landscaped grounds with parking for both cars and bicycles, offers suites varying in size and available on flexible terms and configurations to suit small, medium or large businesses. This business centre provides a variety of spacious meeting rooms, showers, changing rooms and a kitchen. There are lounges and breakout areas where tenants can take a break during a hectic workday. The workspace can be accessed by tenants 24 hours a day, which is great for flexible working.

transport links

Underground	N/A
Train Station	Edinburgh Park
Road Link	N/A
Airport	Edinburgh Airport

Serviced Offices

- **Price** : Â£99 pcm
- **Min Price** : Â£99 pcm
- **Min Size** : 1 wkstns
- **Max Size** : 2200 wkstns
- **Total Size** : 2200 wkstns
- **Min Term** : 3 mnths
- **Max Term** : 36 mnths