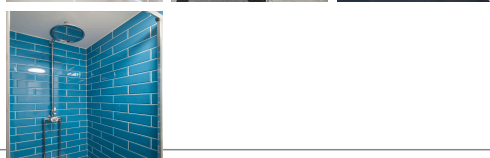
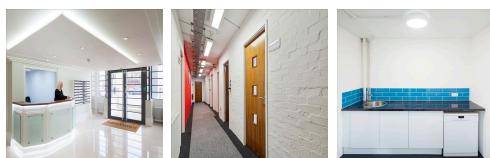
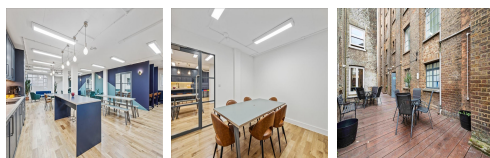
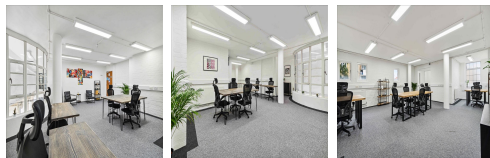


Serviced Office Space UK

14 Chillingworth Road

London N7 8QJ



St Mark's Studios is a beautiful Grade II listed former church, in neo classical style and is conveniently situated within a short walk of Holloway Road, Caledonian Road and Highbury & Islington stations, giving excellent public transport connections to Central London, including those to The City, and the West. The distances from the building to the nearest public transport links are - Underground - Piccadilly line Holloway Road 0.4 km, 4 mins walk Caledonian Road - Piccadilly line 0.6 km, 7 mins walk Drayton Park - Overground 0.7 km, 8 mins walk Caledonian Road & Barnsbury - Overground 1.3 km, 17 mins walk

St. Mark's Studios is an immaculately refurbished iconic listed building that offers high quality and exceptional value for money managed workspace to suit all types of business. There is an impressive 2,000 + square feet of communal space to provide opportunities for flexible working and informal meetings, and a place where clients can relax, interact, network, socialise, and big enough to host functions. The building has a welcoming entrance and reception area, meeting room and an on-site centre manager to ensure the smooth running of your office space, enabling you to concentrate on your business.

transport links

Underground	Holloway Road
Train Station	Highbury & Islington
Road Link	N/A
Airport	London City Airport

Serviced Offices

- **Price** : Â£355 pcm
- **Min Price** : Â£355 pcm
- **Min Size** : 4 wkstns
- **Max Size** : 11 wkstns
- **Total Size** : 194 wkstns
- **Min Term** : 3 mnths
- **Max Term** : 24 mnths