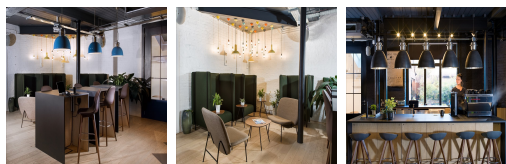


Serviced Office Space UK

25 Horsell Road

London N5 1XL



This business centre is in a perfect area, within walking distance of the exciting buzz of Islington. The centre is just off Holloway Road and within a five-minute walk from Highbury & Islington and Holloway Road stations. The local area provides various lunch and dinner spots, pubs, small independent shops, gyms and beauty parlours, so there are plenty of ways to spend time away from the office. Central London, with more attractions, is easily accessible. The centre is accessible from almost every transport link, placing tenants and their teams in a well-connected and easily accessible location.

This stylish contemporary building has an entrance that makes a statement as the first impression for guests. Spacious, fully-furnished offices offer a team somewhere to work comfortably, where members can move in and get started - no need for time wasted setting up various desks. The refined design and stunning landmark architecture are locally renowned as a commercially significant business establishment incorporating a neutral palette, international style, and industrial materials to create an elegant and fun workspace. This building is a wonderland for all things digital - providing an ever-expanding hub of creatives with never-ending networking opportunities.

transport links

Underground	Holloway Road
Train Station	Highbury & Islington
Road Link	N/A
Airport	London City Airport

Coworking Spaces

- **Price** : Â£299 pcm
- **Min Price** : Â£299 pcm
- **Total Size** : 30 wkstns
- **Min Term** : 3 mnths
- **Max Term** : 3 mnths