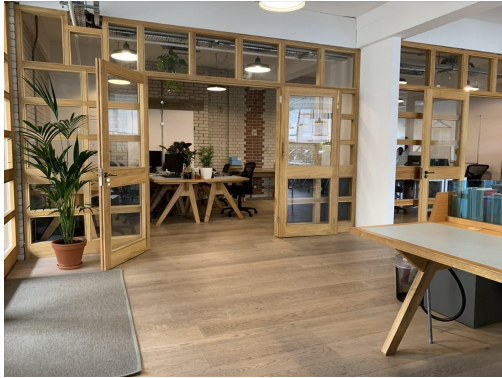


Serviced Office Space UK

London E1 6HU



The space is a two-minute walk from Shoreditch overground ('Orange Line') and a five-minute walk from either Liverpool Street or Old Street stations, so it is extremely well connected. All of Shoreditch's hotspots are only a very short walk away, for instance, Tramshed restaurant, Ace Hotel, Shoreditch House, and the boutiques of Redchurch Street and Boxpark. London's shopping options are magnificent, and the world-famous Harrods is easily accessible via public transport, as is the Westfield Shopping Centre.

The space is set in the prime location of Shoreditch High Street, central London. It features fantastic interiors plus a ground floor restaurant and lounge that led The Evening Standard to declare it 'Best Workspace for Foodies'. Its residents work in diverse fields, from recruitment to music or fashion and technology to real estate. Both private offices seating up to six and a spacious open-plan coworking area, where residents work from hand-crafted desks, are available. Monthly fees per worker range from £350-£450 depending on the contract, including rates, wi-fi, electricity, reception and other office services. Residents currently receive a 20% discount on all food and drinks bills in the restaurant and lounge, plus free admission to various talks and exhibitions.

transport links

Underground	Old Street
Train Station	Liverpool Street Station
Road Link	N/A
Airport	London City Airport

Coworking Spaces

- **Price** : Â£200 pcm
- **Min Price** : Â£200 pcm
- **Total Size** : 104 wkstns
- **Min Term** : 1 mnths