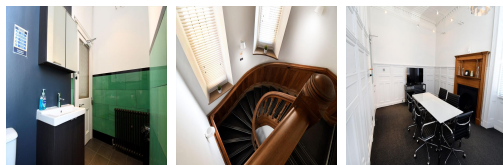
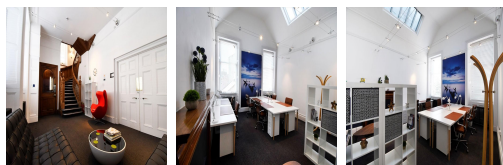
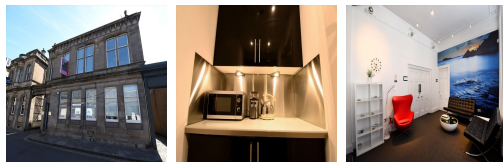


Serviced Office Space UK

93 Constitution Street

Edinburgh EH6 7AE



Leith has continued to go from strength to strength in terms of size and culture. There are many local cafes, pubs and restaurants, banks, newsagents, post offices and shopping centres. There are also gyms, dentists, medical centres, hotels, sports centres and tennis courts right on the doorstep. This centre is located in the heart of Leith and is well connected by transport links. Edinburgh Waverley train station is just a ten-minute drive away, and many local buses serve the area.

This property has been extensively refurbished to provide the perfect hub for like-minded businesses without the high costs associated with traditional business centre operations. There is a variation of self-contained suites ranging in size from 200 to 657 sq ft. The business centre is in a central location with 24-hour access, a shared boardroom, kitchen facilities, male and female toilets, and a secure entry system. Each office is equipped with telecoms and WiFi. Heat, light, cleaning and general maintenance are included in the monthly rental amount. This building is a fantastic option for businesses of all types.

transport links

| | |
|---------------|-------------------|
| Underground | SUBWAY Edinburgh |
| Train Station | SUBWAY Edinburgh |
| Road Link | N/A |
| Airport | Edinburgh Airport |

Serviced Offices

- **Price** : Â£175 pcm
- **Min Price** : Â£175 pcm
- **Min Size** : 1 wkstns
- **Max Size** : 12 wkstns
- **Total Size** : 110000 wkstns
- **Min Term** : 1 mnths
- **Max Term** : 12 mnths