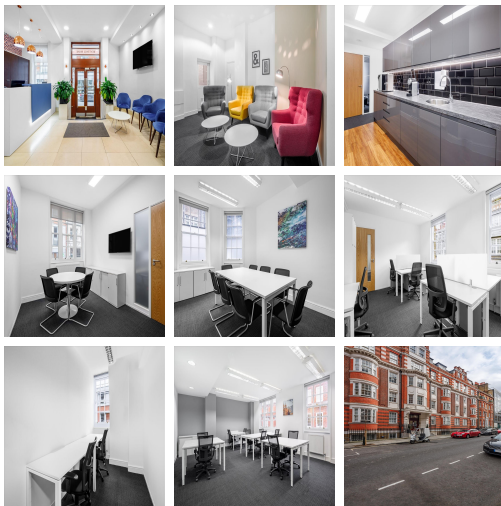


# Serviced Office Space UK

## London W1W 6AB



Positioned close to Regent's Park, the business centre is located among the elegant Regency buildings around Great Portland Street. Regent's Park, Great Portland Street and Goodge Street underground stations are less than 10 minutes away on foot, whilst Marylebone railway station is just over a mile away, providing excellent underground and overground transport links, as well as services to Birmingham Moor Street. There are coffee shops nearby, including Pret A Manger, ideal for the morning boost or as a meeting place.

This elegant business centre fitted out in contemporary style occupies a grand Edwardian building in London's West End. The offices are modern and spacious with sash windows providing lots of natural light, and the centre provides easy to book meeting rooms and business class high-speed internet access. Additional features include reception and secretarial, and virtual office services, as well as showers and secure car parking. Positioned close to Regent's Park, these serviced offices would suit any company working in communications or the media. This centre offers all-inclusive pricing, so you can move in with peace of mind that there will be no unexpected costs each month.

### transport links

**Underground**  
**Train Station**  
**Road Link**  
**Airport**

Great Portland Street Station Toilets  
Euston Station  
N/A  
London City Airport

### Virtual Office

- **Price** : £105 pcm
- **Min Price** : £105 pcm
- **Min Term** : 24 mnths
- **Max Term** : 999 mnths