

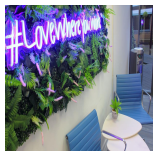
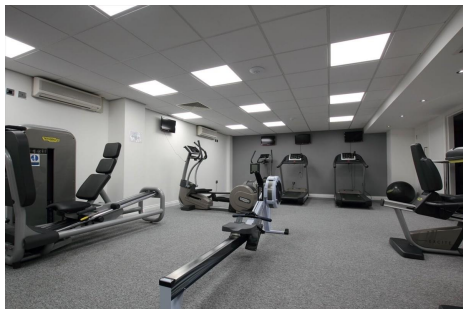
Serviced Office Space UK

79 Hornby Street

Bury BL9 5BN



Situated off Barcroft Street, Bury, the four unique buildings offer a development of high spec, contemporary serviced offices with a gym, catering facilities and ample on-site car parking, minutes from Bury town centre and the M66/M60 motorways, the centre in Bury is easily accessible for commuters. This dynamic environment makes it an ideal setting for professionals, even those commuting from the farthest corners of the wider region. Many restaurants, cafes, shopping centres, and other local amenities are close to this centre.



All offices have individually controlled air conditioning, and all clients have secure 24-hour access to their office suites. A modern, welcoming reception team provides a fantastic first impression for clients and creates an excellent environment to do business. Buildings have ample, free, secure car parking for clients and visitors. With a unique, community-focused approach, clients benefit from a professional, friendly working environment, including an onsite gym, chill-out zones and onsite catering options. The layout of the building is designed to incorporate a functional and fun communal break-out space where clients can meet to have a coffee from the Grab 'n' Go snack area. The building features high-space service facilities, meeting rooms, and conference suites. There is an onsite support team dedicated to dealing with all client requirements. This centre has a cutting-edge infrastructure, with auto-failover for added resilience, and the VoIP telephone system is continually updated to cater to all client requirements.

transport links

Underground	N/A
Train Station	East Lancashire Railway
Road Link	N/A
Airport	Manchester Airport

Serviced Offices

- **Price** : Â£175 pcm
- **Min Price** : Â£175 pcm
- **Min Size** : 1 wkstns
- **Max Size** : 100 wkstns
- **Total Size** : 100 wkstns
- **Min Term** : 3 mnths
- **Max Term** : 12 mnths