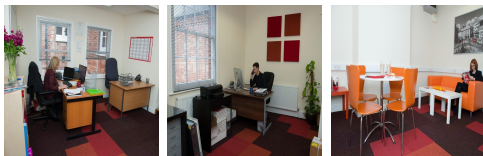
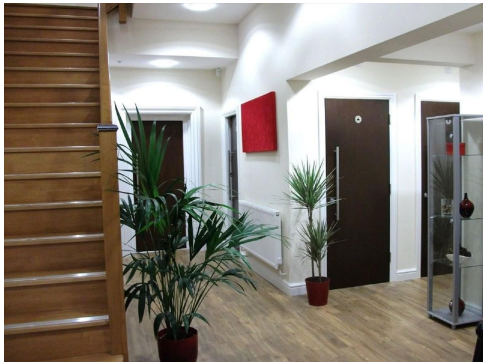


Serviced Office Space UK

Ashby-de-la-Zouch LE65 1BR



Ashby is a thriving Market Town with an abundance of period buildings housing shops, bars and restaurants the length of Market Street. This ancient market town on the borders of Leicestershire and Derbyshire is well placed in the centre of the A42 and M1, leading to most of the main towns and cities in the Midlands. Ashby lies central to the East Midlands cities of Derby, Nottingham and Leicester. Burton upon Trent is a short drive away along with the cities of Birmingham and Coventry easily accessed via the A42 and M1.



These semi-serviced offices provide stunning and unique office space in the heart of Ashby-De-La-Zouch. The offices are ideally placed in the heart of the town with easy access to local amenities and good transport links such as the M1, A50 and A42. They offer units of various sizes to accommodate businesses ranging from 1 or 2 persons up to 20 people in an open-plan space. The centre offers a range of business services to suit any requirements including; semi-serviced office space, virtual offices, meeting and conferencing rooms and serviced apartments. They also offer flexible-working solutions such as day offices, shared offices and co-working. Top quality business support services are also on hand such as; telephone answering, administrative services, document production, onsite IT support, stationary ordering and negotiation, onsite maintenance and dedicated storage. If the Ashby-De-La-Zouch location is not quite right for you this company also have office space available in Glenfield and Castle Donington.

transport links

Underground	N/A
Train Station	The Battlefield Line Railway
Road Link	N/A
Airport	East Midlands Airport

Virtual Office

- **Price** : Â£200 pcm
- **Min Price** : Â£200 pcm
- **Min Term** : 6 mnths
- **Max Term** : 12 mnths