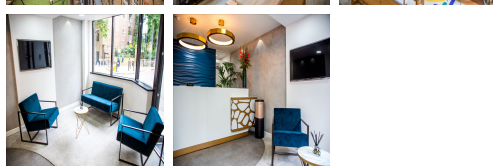
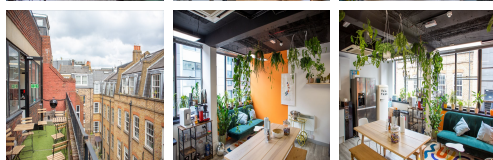
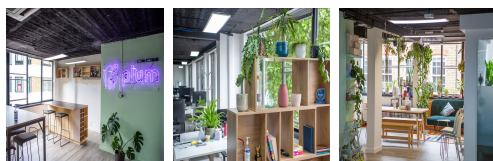


# Serviced Office Space UK

## 2-7 Clerkenwell Green

### London EC1R 0DE



The Business Centre is just a five-minute walk to Farringdon station, with Barbican, Chancery Lane and Old Street stations also just a stone's throw away. London City Airport is just under 7 miles from the centre. Tenants and their teams are placed in a well-connected and easily accessible location. Many restaurants, cafes, shopping centres, and other local amenities are close to this centre. This building is a wonderland for all things digital – providing an ever-expanding hub of creatives with never-ending networking opportunities.

This business centre overlooks the stunning St James's Church Garden and is surrounded by trendy bars and green spaces. Situated near Farringdon Station with excellent transport links around and out of London, this centre can provide clients with a truly enviable working location. This centre contains offices of various sizes and is therefore perfect for small to medium-sized businesses looking for space in a prime and historically rich location. Aside from the attractions of the local area, facilities within the building include a staffed reception and seating area, shower facilities, off-street bike storage and a communal boardroom available for reservation.

### transport links

<b>Underground</b>	Farringdon
<b>Train Station</b>	King's Cross station
<b>Road Link</b>	N/A
<b>Airport</b>	London City Airport

### Serviced Offices

- **Price** : Â£520 pcm
- **Min Price** : Â£520 pcm
- **Min Size** : 3 wkstns
- **Max Size** : 120 wkstns
- **Total Size** : 180 wkstns
- **Min Term** : 12 mnths
- **Max Term** : 24 mnths