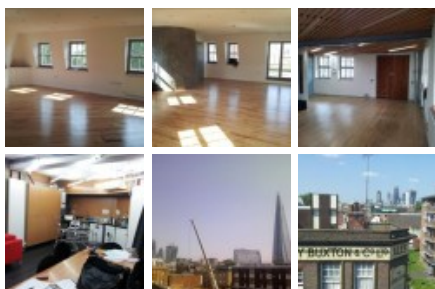


28 Marshalsea Road

London SE1 1HF



This office space is 3-minutes from Borough Underground station, 7-minutes from Southwark Underground station, 9-minutes from London Bridge station and 15-minutes to Blackfriars and the city, communications couldn't be better. M&S, a sandwich shop, three gastro pubs, a park and Borough Market are on the doorstep with chain stores 10-minutes away.

Superb bright and airy warehouse style space in a recently renovated period building with stunning views to the Shard on one side and leafy views to the other. There are windows on all sides, high ceilings and wooden floors plus formal and informal meeting spaces and access to a roof terrace with views as above. The perfect blend of modern and traditional funky workspace to get those creative juices flowing. Office suites from 374 sq ft are available on flexible terms and can be furnished or unfurnished. Workstations on a co-working basis are also available too.

transport links

Underground	Borough
Train Station	London Bridge
Road Link	N/A
Airport	London City

Serviced offices

- **Price** : £400 pcm
- **Min Price** : £400 pcm
- **Min Size** : 3 wkstns
- **Max Size** : 8 wkstns

Leased Space

- **Price** : £39 p sqm pm
- **Min Price** : £39 p sqm pm
- **Min Size** : 374 sq ft
- **Max Size** : 772 sq ft
- **Min Term** : 12 mnths

Shared / Coworking office space

- **Price** : £400 pcm
- **Min Price** : £400 pcm
- **Min Size** : 1 wkstns
- **Max Size** : 8 wkstns
- **Min Term** : 2 mnths