

# Serviced Office Space UK

---

## 5 New York Street

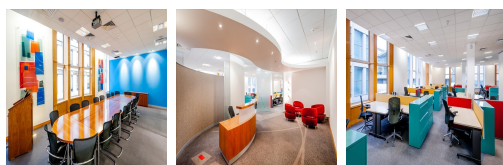
### Manchester M1 4JB



Located in Manchester and with Mosely Street Metrolink stop at the end of the street, this property is ideally located for those travelling into the city centre. For staff or visitors who drive into work, New York Street has a junction with Portland Street meaning that there's quick and easy access to the north and south of the city. Manchester Piccadilly and Oxford Road train stations provide excellent rail links including direct services to London Euston and Birmingham New Street. Manchester Airport can be reached by road or by public transport.



Located in the heart of Manchester's city centre, this property offers high specification office accommodation over four floors. The building has been fully refurbished throughout whilst still maintaining its original features. Several amenities and transport links, including the Metrolink and both Manchester Piccadilly and Oxford Road train stations, are within a short walk of the building for your staff's convenience. With 24-hour access available, tenants can work whenever they need to and the range of amenities on-site include a management team, office cleaning, lift access and reception services.



### transport links

<b>Underground</b>	N/A
<b>Train Station</b>	St. Peters Square Metrolink
<b>Road Link</b>	N/A
<b>Airport</b>	City Airport Ltd

### Leased Spaces

---

- **Min Size** : 1 sq ft
- **Max Size** : 50 sq ft
- **Min Term** : 36 mnths
- **Max Term** : 60 mnths