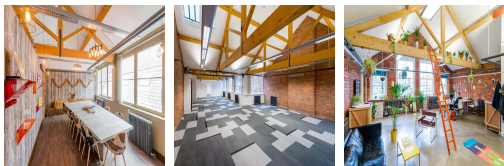
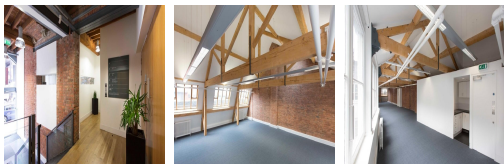


# Serviced Office Space UK

## Manchester M1 6DW



This easily accessible business destination ensures excellent transport links with Oxford Road train station, Piccadilly bus terminus and St Peter's Square Metrolink station is only a couple of minutes' walk away. The central shopping districts of Deansgate and Market Street are also easily accessible by foot, ideal for after work or lunchtimes. Amenities nearby for staff include Philpotts, Tesco, Sainsbury's, Pizza Express, Fellicini and Boots as well as an array of bars and newsagents on your doorstep.

This property is a stunning Grade II Listed office building on Portland Street, in Manchester city centre. The combination of this period property's architecture along with the modern office space available creates a contemporary yet comfortable office environment. Secure parking spaces are a huge benefit to tenants and visitors, and other amenities include reception services, a cleaning team, a management team and 24-hour access. As well as this, there is also a security system in place round-the-clock, for that added peace of mind. The property is suited to a range of business types, looking for space in Manchester.

### transport links

<b>Underground</b>	N/A
<b>Train Station</b>	St. Peters Square Metrolink
<b>Road Link</b>	N/A
<b>Airport</b>	City Airport Ltd

### Leased Spaces

- **Min Size** : 1 sq ft
- **Max Size** : 50 sq ft
- **Min Term** : 36 mnths
- **Max Term** : 60 mnths