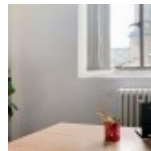
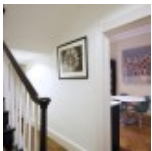




117 George Street

London W1H 7HF



Located on the predominately residential north end of George Street, equidistant between Montagu Square and Great Cumberland Place. Five to seven minute walk from Marble Arch, Bond Street. Ten to fifteen minute walk from Baker Street, Edgware Road and Paddington. Short walking distance from a great number of choices for cafes and restaurants; grocery shop, cash point, post office and Boris bikes. The shops of Oxford Street and restaurants of Mayfair are nearby. Marble Arch Tube station is only five minutes away on foot and Edgware Road, Baker Street and Bond Street are all within walking distance.

This delightful Georgian townhouse on George Street has been converted into a contemporary business space that hosts a number of stylishly furnished serviced offices. The first floor is occupied by the owner's private investment house, property investment team, and clean tech investment business. On the ground floor there is a stylish meeting kitchen with a selection of teas and a high quality coffee machine that can be used as a break out space and for informal meetings. There is a large functional boardroom, which can be hired to suit your needs. The building offers convenient kitchen facilities - fridge, microwave etc for occupants. This space offers a creative, relaxed and professional working environment. All communal spaces feature high ceilings, wooden floors, and photographic artwork on the walls. The offices available on the second and third floor are well-lit and productive workplaces.

transport links

Underground	Marble Arch, Baker Street, Bond Street
Train Station	Paddington, Victoria
Road Link	A40
Airport	Heathrow

Serviced Offices

- **Price** : Â£500 pcm
- **Min Price** : Â£500 pcm
- **Min Size** : 3 wkstns
- **Max Size** : 8 wkstns
- **Total Size** : 8 wkstns
- **Min Term** : 12 mnths
- **Max Term** : 12 mnths