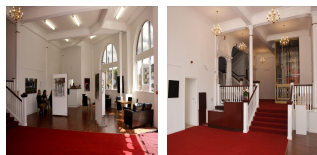
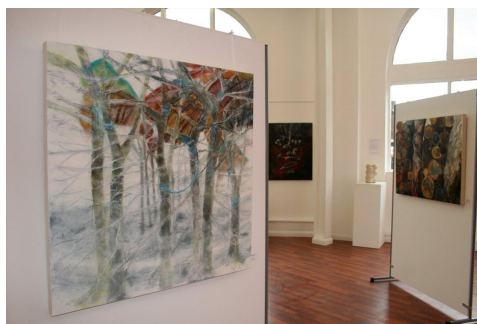


Serviced Office Space UK

2 St George's Road

Bolton BL1 2DD



This workspace is situated in a lively neighbourhood and offers a plethora of amenities for teams looking for a productive work environment. It boasts easy access to various transportation options, including metro stations, bus routes, and trains, as well as international airports nearby. Additionally, there are ample restaurants, shopping centers, and other leisure outlets nearby, all within walking distance. This means team members can enjoy stress-free and convenient commutes while having access to all essential services and leisure activities. The workspace strikes a great balance between accessibility and convenience, allowing for maximum productivity.

This workspace is an excellent choice for individuals and teams needing a productive environment to work in. The space has a range of ergonomic furniture, comfortable seating, meeting, and conference rooms, and private phone booths, making it perfect for members requiring different work environments based on individual preferences. Multiple outlets, charging stations, and WIFI access points throughout space ensure seamless communication and collaboration, supported by high-speed internet and advanced technology. Whether members prefer working alone in a quiet space or working with others in a collaborative environment, this workspace has everything needed to stay connected and productive.

transport links

Underground	Subway
Train Station	Bolton
Road Link	N/A
Airport	City Airport Ltd

Leased Spaces

- **Price** : £1 pcm
- **Min Price** : £1 pcm
- **Min Size** : 2 sq ft
- **Max Size** : 60 sq ft
- **Total Size** : 3300 sq ft
- **Min Term** : 3 mnths
- **Max Term** : 10 mnths