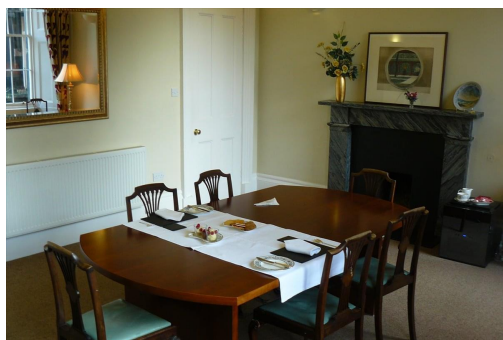


Serviced Office Space UK

1 Rutland Square

Edinburgh EH1 2AS



The office is located in the heart of Edinburgh's financial district with close proximity to a number of shops, pubs and restaurants. The office benefits from good public transport links.

This Grade A Georgian building has been fully refurbished to offer fantastic modern offices whilst retaining many of the original period features. The superbly furnished suites are available for 1 to 14 people. You can also book the board room for meetings or training. The offices benefit from phone lines, high speed Internet connection and Category 5 cabling. The offices are ready to move into with instant licence agreements. In addition, there is Chairman quality room with meeting area available for £1500 per month.

transport links

Underground	SUBWAY Edinburgh
Train Station	Edinburgh Waverley Station
Road Link	N/A
Airport	Edinburgh Airport

Serviced Offices

- **Price** : Â£400 pcm
- **Min Price** : Â£400 pcm
- **Min Size** : 2 wkstns
- **Max Size** : 6 wkstns
- **Total Size** : 14 wkstns