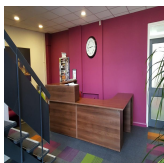


Serviced Office Space UK

9 Orgreave Road

Sheffield S13 9LQ



This Business Centre is ideally positioned for quick access to the Sheffield Parkway and motorway network. It is situated near the new Waverley Village and the advanced Manufacturing Park. It is also on good bus routes. Woodhouse railway station is also within walking distance. Many restaurants, cafes, shopping centres, and other local amenities are close to this centre. There are lounges and breakout areas where tenants can take a break during a hectic workday. The centre is accessible 24 hours a day so the clients can work flexibly.

This Business Centre is a multi-let business centre, with modern facilities and fully furnished offices including broadband and telecoms. There is a reception area, full kitchen facilities, 24-hour access, free car parking and a fob entry system. There are three different-sized meeting rooms available too free of charge to tenants. Rents include rates, heat and light. Quality office space is high in demand here. This space can be accessed by tenants 24 hours a day. This building is a wonderland for all things digital – providing an ever-expanding hub of creatives with never-ending networking opportunities.

transport links

Underground	N/A
Train Station	Woodhouse
Road Link	N/A
Airport	Robin Hood Airport

Serviced Offices

- **Price** : Â£250 pcm
- **Min Price** : Â£250 pcm
- **Min Size** : 1 wkstns
- **Max Size** : 6 wkstns
- **Total Size** : 30 wkstns
- **Min Term** : 6 mnths
- **Max Term** : 12 mnths