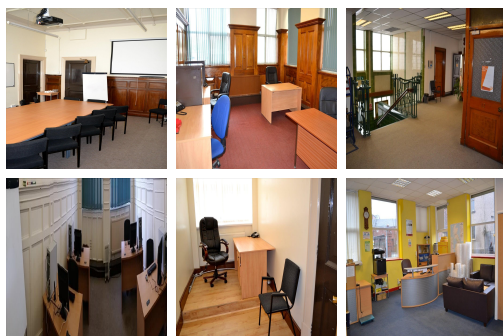
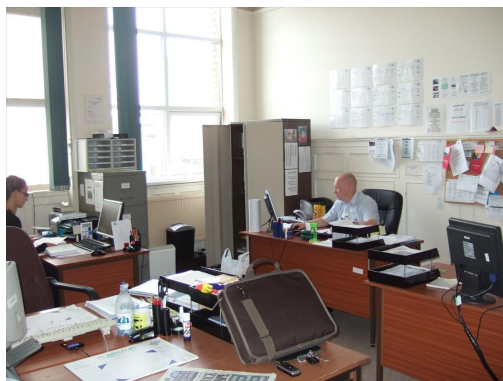


Serviced Office Space UK

Cobden Street

Salford M6 6NA



This workspace is in the heart of Salford. Trains to Manchester city centre run typically every 10 minutes, delivering tenants into the city centre within minutes. This centre is just 2 miles from Manchester city centre, adjacent to the A6. Several bus staging points are across the road, providing good travel opportunities. The surrounding area offers a wide range of eateries, and amenities like banks and retail shops, providing tenants with everything at their doorstep. This workspace is accessible from every transport link placing tenants and their teams in a well-connected centre.

Spacious, fully-furnished offices offer a team somewhere to work comfortably, where members can move in and get started - no need for time wasted setting up various desks. This stylish contemporary building has an entrance that makes a statement as the first impression for guests. Members can also enjoy micro-roasted coffee and fresh fruit water. This ultra-modern business centre has amenities that are affordable and meaningful. This modern workspace has all the amenities tenants need to hit the ground running from the day of move-in. This amenity-rich complex is the perfect location for any business seeking a modern workspace to thrive.

transport links

Underground	N/A
Train Station	St. Peters Square Metrolink
Road Link	N/A
Airport	Manchester Airport

Coworking Spaces

- **Price** : Â£36 pcm
- **Min Price** : Â£36 pcm
- **Total Size** : 21 wkstns
- **Min Term** : 1 mnths
- **Max Term** : 12 mnths