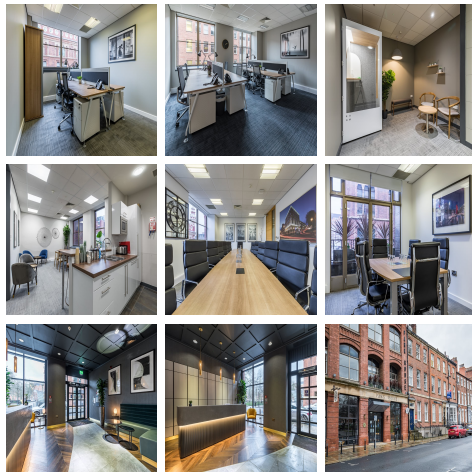


Serviced Office Space UK

Leeds LS1 2PW



Park House is situated in Park Square; one of the most in-demand, elite business areas of Leeds. Right in the heart of the legal and financial district, this is one of the best locations to choose as the home of your business. Transport links are easily accessible with the train station less than 10 minutes walk from the building and nearby access to major road links to the surrounding areas and the rest of the country.

Park House is a newly renovated period property right on the doorstep of Leeds City Centre's most beautiful green space. Situated right in the heart of the legal and financial district, it's the perfect location for those searching for a prestigious home for their business. Park House is made up of high quality, spacious private offices that benefit from large windows and an abundance of natural light, as well as an array of meeting rooms and breakout spaces. There are offices to suit between 2 - 25 people, and these can be customised to suit individual requirements. Alongside serviced offices, this centre offers five executive meeting rooms. The centre can comfortably accommodate up to 20 delegates. Each meeting room offers reliable high-speed internet connection, guest Wi-Fi, the latest SMART Board technology and Videoconferencing facilities. This popular centre offers all clients access to a communal breakout room; whether you want to relax or meet your neighbours this centre has an amiable, professional feel. The all-inclusive rates allow you to focus on your business whilst the centre look after you and the building.

transport links

| | |
|----------------------|--------------------------------------|
| Underground | N/A |
| Train Station | Leeds station |
| Road Link | M1/M62/M621 |
| Airport | Leeds Bradford International Airport |

Serviced Offices

- **Price** : Â£300 pcm
- **Min Price** : Â£300 pcm
- **Min Size** : 3 wkstns
- **Max Size** : 30 wkstns
- **Total Size** : 203 wkstns
- **Min Term** : 3 mnths
- **Max Term** : 12 mnths