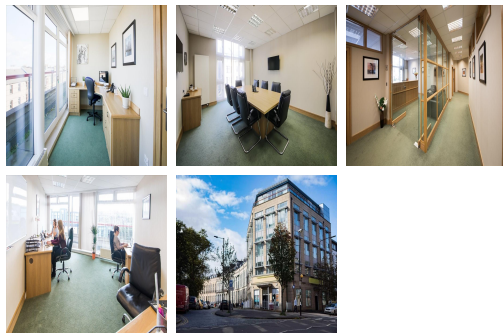


# Serviced Office Space UK

---

## Edinburgh EH7 4LZ



This business centre is located on McDonald Road, close to the city centre. The centre has excellent transport links. Edinburgh Waverley Railway Station is just a 15-minute walk from which clients can catch services across the country, indulging direct trains to London Kings Cross. Edinburgh is awash with eateries and bars, including the magnificent Dome and BrewDog for drinks. There is also no shortage of places to stay, including The Principal Edinburgh, the Radisson Collection Hotel and The Balmoral.

This bright and modern office building comprises office space close to Edinburgh city centre. Businesses will benefit from proximity to major international companies, creating tremendous opportunities for networking and passing trade. With quiet surroundings, companies will enjoy a pleasant working environment all year round. Offices are fully furnished and come in various sizes, from small individual workspaces to larger team office suites. All offices are of the highest quality and are well-equipped for business with high-speed internet access and the latest business technologies. Meeting rooms are available to hire for larger groups, providing ideal venues for meetings, workshops and special events.

### transport links

<b>Underground</b>	SUBWAY Edinburgh
<b>Train Station</b>	Edinburgh
<b>Road Link</b>	N/A
<b>Airport</b>	Edinburgh Airport

### Serviced Offices

---

- **Price** : £300 pcm
- **Min Price** : £300 pcm
- **Min Size** : 1 wkstns
- **Max Size** : 130 wkstns
- **Total Size** : 130 wkstns
- **Min Term** : 6 mnths
- **Max Term** : 24 mnths