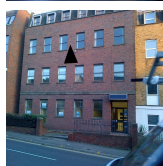
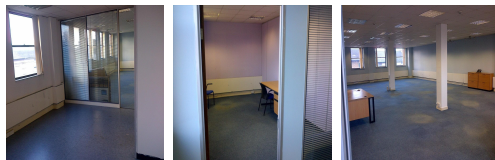
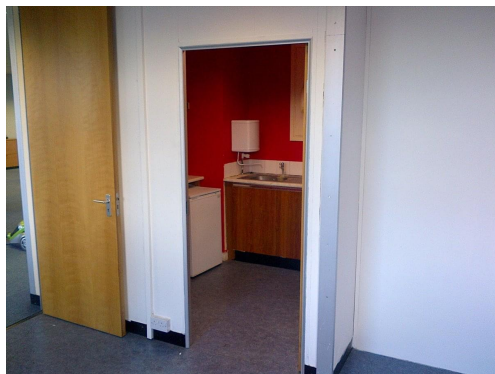


Serviced Office Space UK

Maidstone ME14 5DZ



Access to all parts of the city is made easy through numerous subway stations, bus stops, and airports. Entrepreneurs can indulge in the city's best spots without worrying about hustling around town too much. The property is accessible within a short walk of the main shopping town of Maidstone and a mile from the M20 and M2. Maidstone is the County Town of Kent and has two mainline railway stations. Many restaurants, cafes, shopping centres, and other local amenities are close to this centre. Fantastic transport links are available, placing tenants and their teams in a well-connected and easily accessible location.

The centre provides fully furnished offices with high-speed internet, parking space, meeting space, modern interior design, and IT and telecom services. This exquisitely furnished and exceptionally versatile professional business centre - corporate workspace solution provider is one of the area's most exceptionally innovative and commercially renowned office buildings. These offices are 2,100 square feet in size and all floors are easily accessible by a passenger lift at the office. Parking availability for three cars is available at the workplace. The offices are mainly open plan with separate staff room, kitchen, single office and store room, but can also be divided up as per the prospective tenant sees fit.

transport links

Underground	N/A
Train Station	Maidstone East
Road Link	N/A
Airport	Rochester Airport

Leased Spaces

- **Price** : Â£5 pcm
- **Min Price** : Â£5 pcm
- **Min Size** : 1 sq ft
- **Max Size** : 7 sq ft
- **Total Size** : 400 sq ft
- **Min Term** : 1 mnths
- **Max Term** : 12 mnths