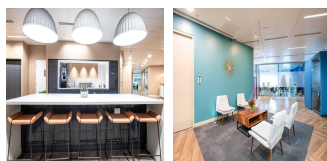
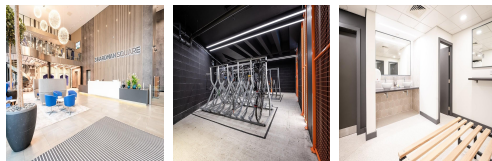
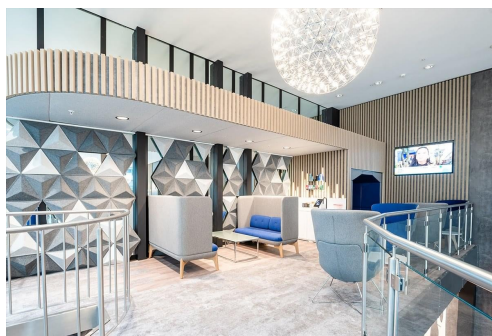


# Serviced Office Space UK

---

## 3 Hardman Square

### Manchester M3 3EB



The workspace is situated in the heart of Manchester, placing tenants and their teams in a well-connected and easily accessible location. Clients can enjoy local eateries serving a variety of cuisines and entertaining their guests. This building is a wonderland for all things digital – providing an ever-expanding hub of creatives with never-ending networking opportunities. The centre is accessible from almost every transport link, placing tenants and their teams in a well-connected and easily accessible location. This centre is conveniently located and boasts excellent transport links as well.

This centre has private office solutions to cater to all the needs in a community where companies grow together. These spaces help to promote team productivity. The refined design and stunning landmark architecture are locally renowned as a commercially significant business establishment incorporating a neutral palette, international style, and industrial materials to create an elegant and fun workspace. Spacious, fully-furnished offices offer a team somewhere to work comfortably, where members can move in and get started immediately - no need for time wasted setting up various desks.

### transport links

|               |                             |
|---------------|-----------------------------|
| Underground   | N/A                         |
| Train Station | St. Peters Square Metrolink |
| Road Link     | N/A                         |
| Airport       | Manchester Airport          |

### Serviced Offices

---

- **Price** : Â£280 pcm
- **Min Price** : Â£280 pcm
- **Min Size** : 2 wkstns
- **Max Size** : 27 wkstns
- **Total Size** : 456 wkstns
- **Min Term** : 3 mnths
- **Max Term** : 12 mnths