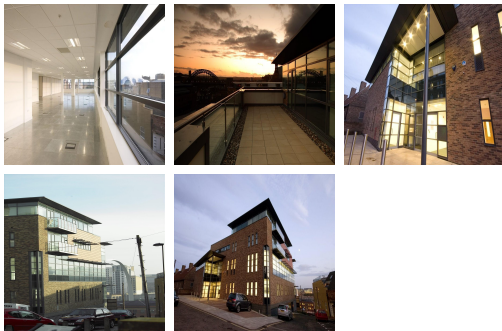
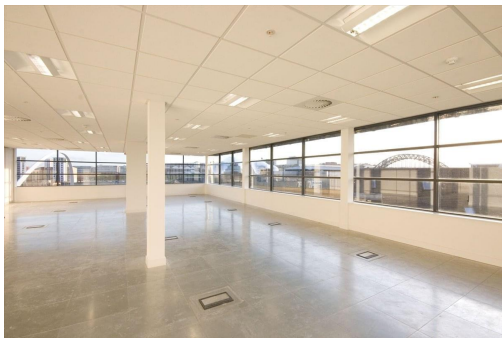


Serviced Office Space UK

Garth Heads

Newcastle NE1 2BU



The workspace is situated in the heart of Newcastle, placing tenants and their teams in a well-connected and easily accessible location. The site benefits from excellent public transport links and is near Newcastle city centre. Newcastle Central Train Station is a 10-minute walk, the city centre is a 7-minute walk, and the Quayside is a 2-minute walk. The nearest Metro station, Manors, is 0.3 miles and a 3-minute walk. Newcastle International Airport is 8.4 miles away. The site has excellent road links, with the A1 located within 2.6 miles and the A167 (M) close by.

This building is a wonderland for all things digital – providing an ever-expanding hub of creatives with never-ending networking opportunities. The office space has been built with the utmost sophistication so clients can work here in a pleasant, refreshing mood. This business centre provides fully furnished offices with high-speed internet, parking space, meeting space, professional-grade daily cleaning services, IT support and telecom services, kitchen facilities, and much more. This thoughtfully designed workspace incorporates lush interiors and best-in-class services and amenities to provide tenants with the most productive day at work.

transport links

Underground	Manors
Train Station	Manors
Road Link	N/A
Airport	Newcastle Airport

Leased Spaces

- **Price** : Â£2 pcm
- **Min Price** : Â£2 pcm
- **Min Size** : 20 sq ft
- **Total Size** : 3421 sq ft
- **Min Term** : 12 mnths
- **Max Term** : 24 mnths